

JetWave 5G 22dBi Directional Antenna

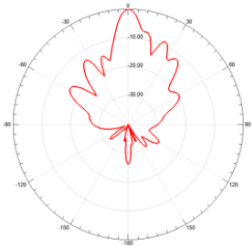
JWDA-5G-22dBi-SM-00



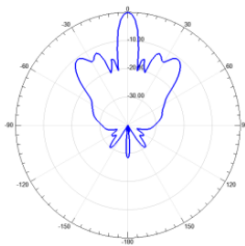
- ▶ Antenna Type : Directional Antenna
- ▶ Frequency : 5GHz
- ▶ Gain : 22 dBi
- ▶ Connector : 2 x SMA/F
- ▶ Polarization :Dual Linear
- ▶ Dimension : 380 x 380 x 18 mm
- ▶ Temperature : -40~65°C
- ▶ Apply to :
JetWave:3220/3420/4221/4211/2460/2212 series/2211C/2714 series
(Required relevant Antenna Cable)

Specification

Horizontal

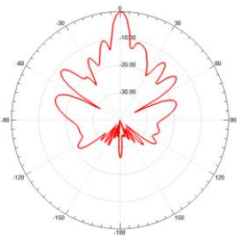


V-pol. H-Plane

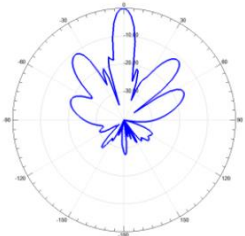


H-pol. H-Plane

Vertical



V-pol. E-Plane



H-pol. E-Plane

Features

Antenna Type	Directional Antenna
Frequency	5GHz
Gain	22 dBi
Polarization	Dual Linear
Power handling	50W Max
Impedance	50 Ohm
HPBW/horizontal	9°
HPBW/vertical	9°
V.S.W.R(Max)	1.3 : 1

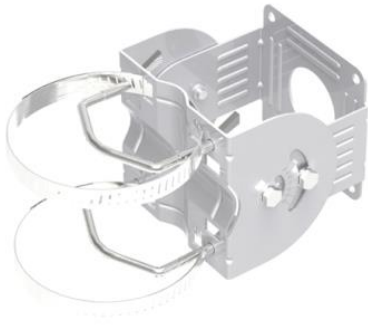
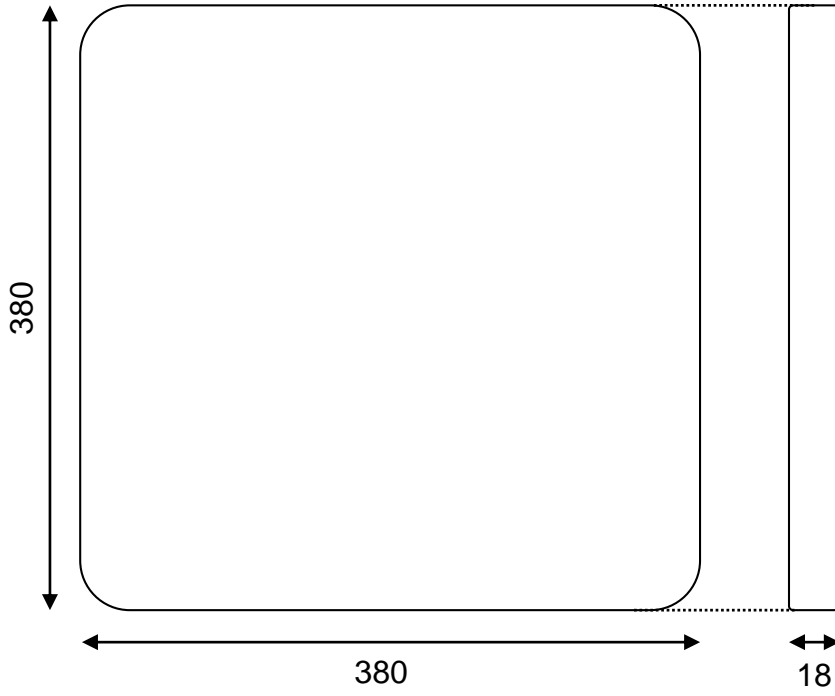
Mechanical & Environmental

Connector	2 x SMA/F
Radome color	White
Radome Material	Plastic
Dimension	380 x 380 x 18 mm
Weight	1500g
Temperature	-40~65°C

Apply Model & Antenna Cable

JetWave 3220/3420	JWA-Cable-SM-to-SM-00
JetWave 4221/4211	JWA-Cable-NM-to-SM--WP-00
JetWave 2460	JWA-Cable-NM-to-SM--WP-00
JetWave 2212 JetWave 2211C	JWA-Cable-SM-to-SM-00

Dimension (Unit = mm)



**Adjustable Cross Direction
Mounting Kit Included**