

JetBox 3350-iw

Embedded Linux Computer: 2 LAN, 2 Isolated Serial



- Embedded Linux ready
- Linux SDK (toolchain, cross-compiler) provided
- Atmel ARM AT91RM9200 180 MHz, fanless
- 2 LAN, 2 Isolated RS232/422/485
- One microSD card slot
- -40~80°C operating temperature



Overview

Embedded Linux Ready

Korenix is devoted to the Linux computing and benefits customers by providing the JetBox series with embedded Linux ready system and easy-to-use interface. Compared to general purpose Linux system, embedded Linux is performance-optimized for front-end industrial control.

RISC-Based Computer with low power consumption

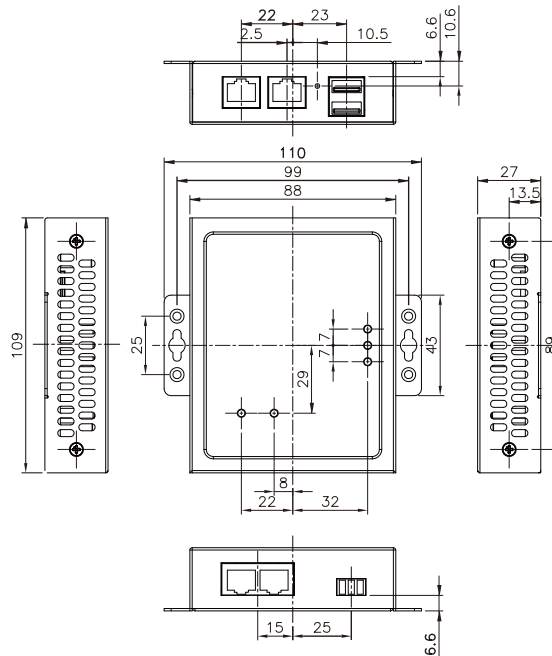
The JetBox3350-i is a RISC-based computer with

lower power consumption and is stable and reliable. The JetBox3350-i carries 2 LAN ports, 2 USB ports and 2 Serial ports to be the best solution in industrial control.

Isolated Serial Port

The JetBox3350-i provides 2KV isolation protection for two RS232/422/485 ports; therefore it is suitable to adapt to the critical industrial environments.

Dimensions (Unit = mm)



Industrial
PoE Switch

IP67/68
Ethernet Switch

Rackmount
Managed
Switch

Gigabit Switch

Redundant
Switch

Entry-Level
Switch

Networking
Computer

Communication
Computer

Ethernet
I/O Server

Serial Device
Server

Media
Converter

Multiport
Serial Card

SFP Module

Din Rail
Power Supply

Hardware Specifications

System

Processor:

Atmel ARM AT91RM9200 180 MHz

System memory: 64MB SDRAM

System flash: 16MB ROM

Ethernet: 10/100 Based-Tx RJ-45 connector x2

Storage:

microSD card slot x1

Serial port: RS232/422/485 x2 (RJ45 connector)
with 2KV isolation protection

USB: USB 2.0 full speed x2 (Host)

Supporting devices: USB flash, wireless dongle

LED per port (on the port):

Link/Activity (Green on/ Green blinking)

Full Duplex/Collision (Yellow on/ Yellow blinking)

LED per unit:

Power on/off x1 (Green on/off)

Ethernet Link/ Activity (Green on/ Green blinking) x2

Serial Tx only(Green),Rx only(Red),Both (Orange) x2

Reset button x1

HW Watchdog timer:

Generates a time-out system reset, 1sec

Power Supply: DC 12~48V

Power Consumption: 7.2W

OS support: Embedded Linux 2.6.21

Mechanical

Construction:

Rugged Aluminum Alloy Chassis, IP31 protection

Color: Silver

Mounting: Wall mount

Dimension: 109(H) x 88(W) x 27(D) mm

Net weight: 0.5kg

Environment

Operating Temp:

-40 ~ 176°F(-40 ~ 80°C), 5 to 95% RH

Storage Temp: -40 ~ 176°C(-40 ~ 80°C), 5 to 95% RH

Regulation:

FCC class A, CE

EN55022 class A

EN55024

EN61000-3-2, 3

EN61000-4-2, 3, 4, 5, 6, 8, 11

IEC 60950

Shock: IEC60068-2-27 (50g peak acceleration)

Vibration: IEC60068-2-6 (5g/10~150Hz/operating)

MTBF: greater than 200,000 hours@25°C

Warranty: 5 years

Linux Specifications

Embedded Linux (JetOS93 lite)

Bootloader: JetBox bootloader

Linux Kernel: 2.6.21

Shell: GNU ash

File system: jffs2, NFS, Ext2, Ext3, VFAT, FAT

Device drivers: microSD card, USB, Watchdog timer, UART, Ethernet

Protocol: ARP, PPP, CHAP, IPv4, PAP, ICMP, TCP, UDP, NFS

Software packages: busybox (telnetd, inetd, udhcp, syslogd), diocfg, lrzsz, minicom, microcom, ncurses, ser2net, setserial, bridge-utils, ethtool, goahead web server, iptables, net-snmp, ntp, openssh, openssl, pppd, ftpd, rppoe, smtpclient, wireless-tools

Korenix Linux auto-run function

Customized configuration

Process monitoring

Serial Interface

Serial service modes: TCP server

LAN Interface

Ethernet: 10/100 Based-Tx RJ-45 connector x2, auto MDI/MDI-X

Management & Security

Security: HTTPS, SSH

SNMP: MIB and traps

NTP: for time management

SDK

Linux tool chain: Gcc (C/C++ PC cross compiler), uClibc, libstdc++

Linux sample code

Ordering Information

JetBox 3350-iw Atmel 180MHz, 12~48V DC, 64MB SDRAM

Includes:

- JetBox 3350-iw
- Serial cable (RJ45 to DB9 male, 150cm) x2
- Attached 3-pin power terminal block
- Quick installation guide
- Documentation and software CD-ROM

Optional Accessories

- Additional applications on micro-SD card: micro-SD card capacity is 1G
mSD1G-LM mSD 1G, Modbus gateway for Linux