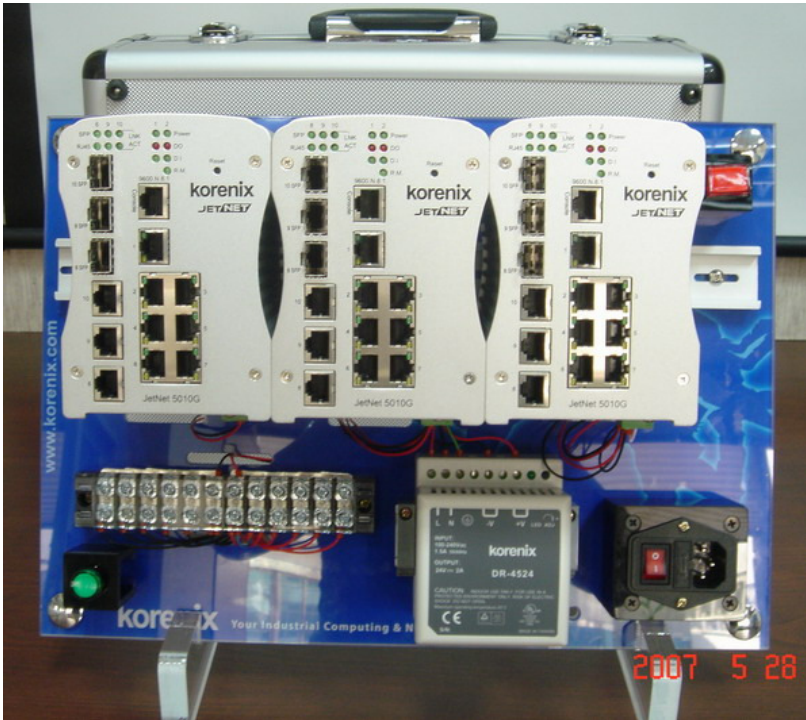


Introduction

Korenix Demo Kit is designed to demonstrate Korenix products. In order to let customers understand Korenix products' features and functionality under various kinds of circumstances, Korenix produces this portable demo box. In this limited box space, Korenix organizes Korenix products for the best results, and impresses customers with not only product introduction, but also live demonstration.

Package checklist

1. Demo Kit



2. Accessory

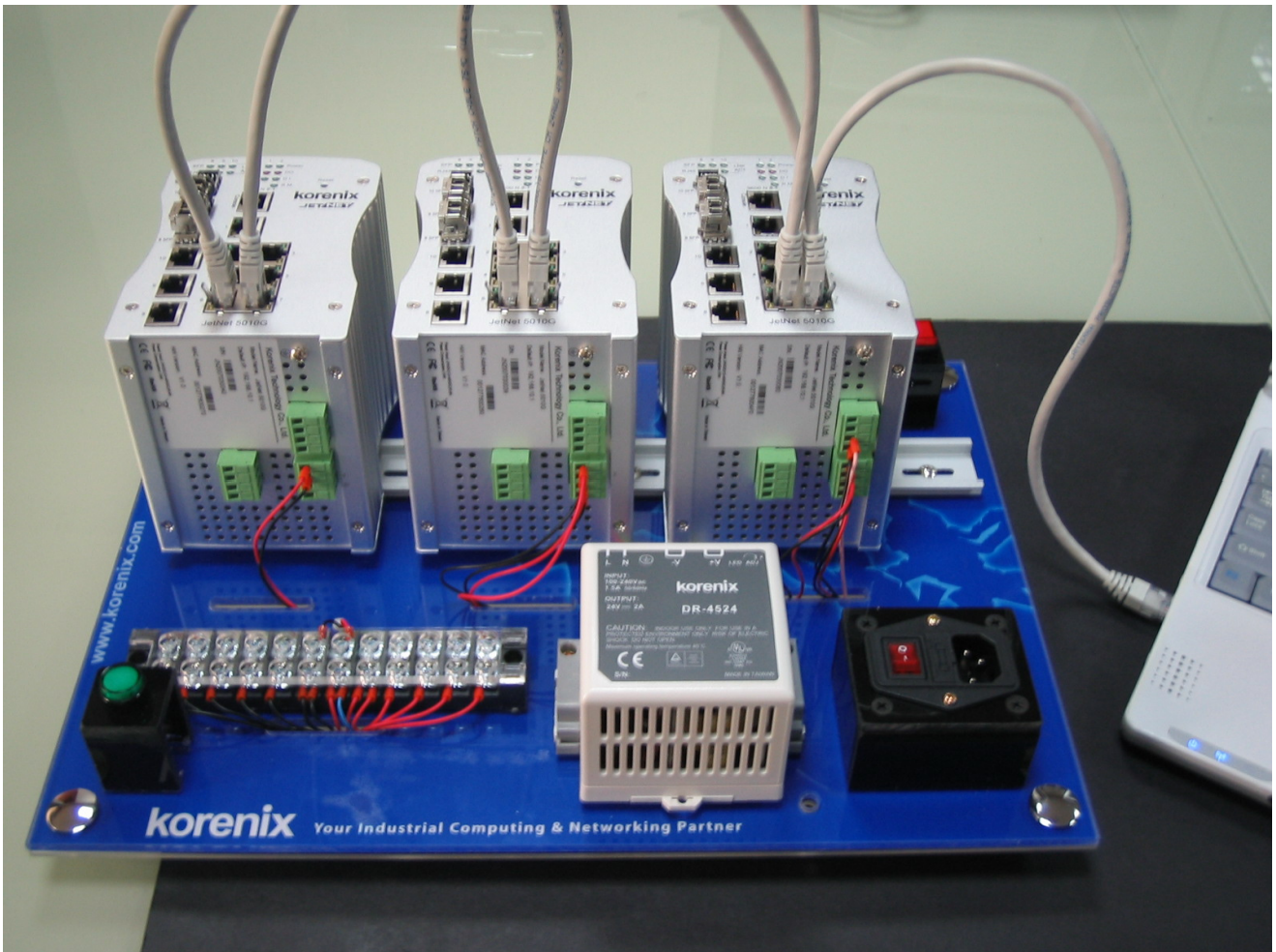


Default settings are as follows:

The default IP of JetNet5010G is: 192.168.10.1/255.255.255.0

The default username and password are: admin/admin

Connect Ethernet to PC and JetNet 5010G as below.



Preparation for Web Interface

JetNet 5010G provides HTTP Web Interface and Secured HTTPS Web Interface for web management.

1. Launch the web browser (Internet Explore or Mozilla Firefox) on the PC.
2. Type <http://192.168.10.1> and then press **Enter**.
3. The login screen will appear next.
4. Key in user name and the password. Default user name and password are both **admin**.



The screenshot shows a dialog box titled "Korenix JetNet5010G Switch Manager". It contains the text "Please enter user name and password." Below this, the "Site:" is set to "192.168.10.8". There are two input fields: "User Name:" with the text "admin" and "Password:" with "*****". At the bottom, there are "OK" and "Cancel" buttons.

5. Click on **Enter** or **OK**. Welcome page of the web-based management interface will then appear.



The screenshot shows the web management interface for the JetNet 5010G switch. The page title is "Welcome to the JetNet 5010G Industrial Managed Switch". The interface includes a navigation menu on the left with options like System, Basic Setting, Port Configuration, Network Redundancy, VLAN, Traffic Prioritization, Multicast Filtering, SNMP, Security, Warning, Monitor and Diag, Device Front Panel, Save, and Logout. The main content area displays system information in a table:

System Name	JetNet 5010G
System Location	
System Contact	
System OID	1.3.6.1.2.24062.2.1.3
System Description	JetNet 5010G Industrial Managed Switch
Firmware Version	v1.0.12d.20070410
Device MAC	00:12:77:60:00:90

At the bottom, there is a copyright notice: "Copyright (c) 2006 Korenix Technology Co., Ltd. All Rights Reserved."

For **Secured Web Interface**, please type in <https://192.168.10.1>

Preparation for Serial Console

In JetNet 5010G package, Korenix attached one RS-232 DB9 to RJ-45 console cable. Please attach RS-232 DB9 connectors to your PC COM port, connect RJ-45 to the console port of the JetNet 5010G.

1. Go to Start -> Program -> Accessories -> Communication -> Hyper Terminal.
2. Give a name to the new console connection.
3. Choose the COM name.
4. Select correct serial settings. The serial settings of JetNet 5010G are as below:
Baud Rate: 9600 / Parity: None / Data Bit: 8 / Stop Bit: 1
5. After connected, you can see Switch login request.
6. Login the switch. The default username is "admin", password, "admin".

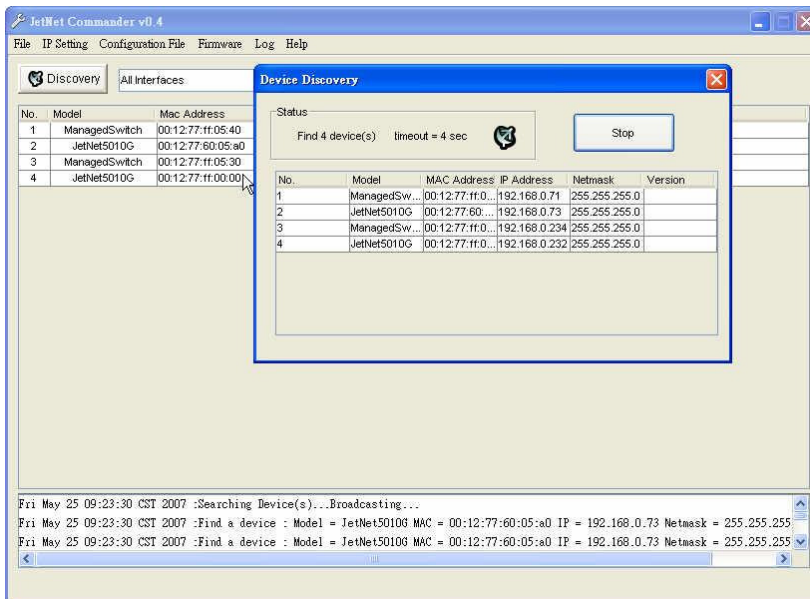
```
Booting...
Switch login: admin
Password:

Jetnet5010G (version 0.30-20061211).
Copyright 2006-2010 Korenix Technology Co., Ltd.

Switch>
```

JetView

JetView is a window utility which can do auto discovery, grouping IP settings, group firmware upgrade and group configuration file backup/ restore, it also supports multi-platform features.



Note: please disable the firewalls of your PC or laptop, the firewall enable may cause some unexpected results.